



Whether you're cruising down our Alpine slides or cooling off on a hot summer day by splashing down one of our four waterslides, Attitash Bear Peak has everything for that Perfect Summer Vacation.



### Alpine Slides

The only ride of its kind in New Hampshire or Maine! Thrill seekers, and those just looking for a leisurely ride, will love winding down the slopes. The Alpine Slide has been New Hampshire's favorite summer attraction for the last twenty-five years. This awesome attraction combines a ride up in one of the resort's twelve lifts with a scenic mile-long journey down the mountainside in an Alpine Slide sled.



### Waterslides

Cool off on those hot summer days by splashing down one of our four waterslides, including the wet and wild Sidewinder! Ride the rapids of Attitash Bear Peak's newest adventure in a two or three-person raft, or ride solo in a tube, for some of the coolest and wettest fun in the Mount Washington Valley.



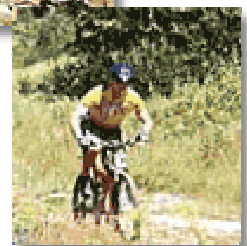
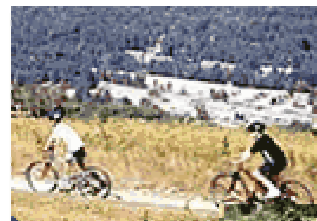
### Scenic Sky Rides

The Summit Triple Chairlift Ride is a one-hour, round-trip tour to the summit of Attitash. Visitors can climb up the White Mountain Observation Tower and enjoy 360-degree views of the Presidential Range and the Mount Washington Valley. Bring a lunch and picnic on the Summit, or take a short walk and search for abundant bush blueberries. Stop into the summit hut for a cool drink, and learn about local wildlife and our environment from one of our staff.



### Mountain Biking

Attitash Bear Peak offers some of the best on and off-slope mountain biking in New England, with lift-serviced, downhill terrain, cross-country trail networks and shuttle service to the White Mountain National Forest. The popular Thorne Pond Interpretive Trail System offers fun and gentle terrain along the Saco River, and includes informational signs that showcase the area and its wildlife. Mountain bike clinics, group coaching, guided treks and a full rental fleet are also available.



**Attitash Mountain Village**  
**Route 302**  
**Bartlett, New Hampshire**  
**603-374-6500**